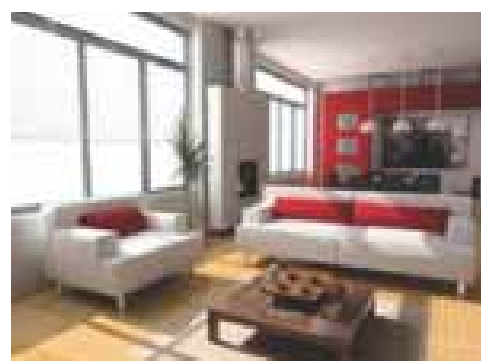
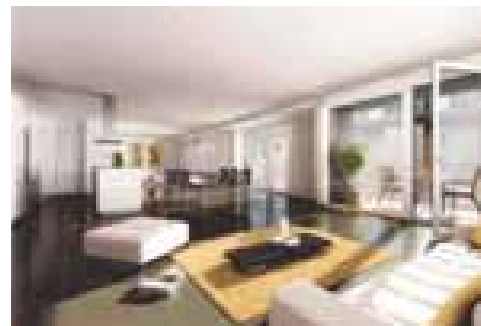


# Specifications

For TOWERS A-4 & B-10 ONLY

A refined touch of *modern* opulence



Location	Walls	Floor	Doors	Windows/Glazing	Others
<b>Living Room</b>	Acrylic Emulsion	Vitrified/Marble or Equivalent	Hardwood door frame with Molded Raised High Density Fiber Panel Doors and Dorset Locks or equivalent	Reinforced UPVC or equivalent	Split A.C Unit (Daikin or equivalent)
<b>Bed Rooms</b>	Acrylic Emulsion	Wooden Flooring in Master Bedroom, Vitrified or equivalent in other Bedrooms	Hardwood door frame with Molded Raised High Density Fiber Panel Doors and Dorset Locks or equivalent	Reinforced UPVC or equivalent	Split A.C Unit (Daikin or equivalent)
<b>Modular Kitchen</b>	2' DADO above counter	Anti-skid ceramic tiles		Reinforced UPVC or equivalent	Laminated Plywood Base, Hinges by Hettich, Laminated MDF shutters with Granite Counter & Stainless steel sink
<b>Toilets</b>	Ceramic tiles in Digital Printing and Acrylic Emulsion	Anti-skid ceramic tiles/ Stone or Equivalent	Hardwood door frame with Molded Raised High Density Fiber Panel Doors and Dorset Locks or equivalent	Reinforced UPVC or equivalent	White Sanitary fixtures of Parryware/Roca. Single Lever Jaquar make CP Fittings or Equivalent and Mirror
<b>Balconies</b>	Permanent texture/ paint finishes	Anti-skid ceramic tiles			
<b>Lift Lobbies</b>	Permanent texture/ paint finishes	Pattern of Vitrified/ Granite / Marble or equivalent			Air conditioned Ground Floor entrance lobby with smart Lounges
<b>External Facade</b>	Permanent texture/ paint finishes				
<b>Security</b>					Video door phone connected with ground floor lobby, Flat to flat intercom facility, Access Control Guard less entry to each Tower to minimize the maintenance charges.

Disclaimer : The Promoters/Architects reserve the rights to add/delete any details / specification mentioned if so warranted by the circumstances.